



Centralized Grease Lubrication System

Reliability and Quality

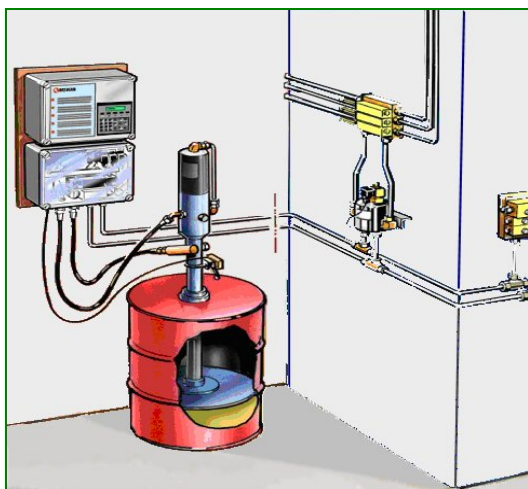
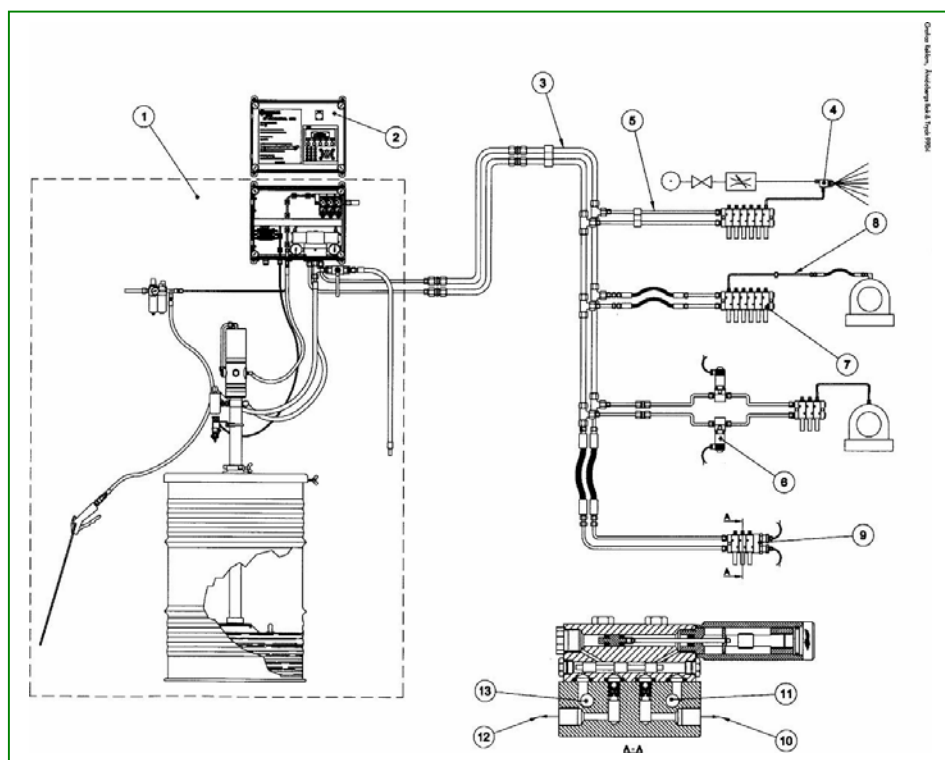
Assalub's dual-line system is a highly reliable automatic Centralized Grease Lubrication system for use with grease up to consistency class NLGI 2. This modular system enables the system to be easily expanded by any number of greasing points by adding more dosers.

Assalub's dual-line systems are used in the Pulp & Paper Industry, Steel Industry Cement Industry, Power Generation Industry and Food & Beverage Industry for continuous lubrication of bearings and open gears.

Assalub's dual-line system comprises an Electronic Control Unit, Valve Control Center, Pumping unit, Dosers / Mounting Baseplates which are connected via dual headers pipes .

Item Description

- | | |
|----|-------------------------|
| 1 | Pumping Unit |
| 2 | Electronic Control unit |
| 3 | Main Dual Headers |
| 4 | Spray system |
| 5 | Dual Sub-headers |
| 6 | Shut-off valve |
| 7 | Doser/Baseplates |
| 8 | Lubrication line |
| 9 | Pressure Transducer kit |
| 10 | Baseplate; outlet #1 |
| 11 | Baseplate; inlet #1 |
| 12 | Baseplate; outlet #2 |
| 13 | Baseplate; inlet #2 |



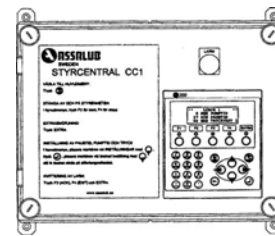
Pumping Unit

(For 400 lb drum; kit assembly #101800 & for 110 lb keg; kit assembly #: 101801)

The pumping unit comprises of an Assalub grease pump suitable for 400 lb. drum or 110 lb. keg can be used on an Assalub Centralized Grease Lubrication system. The grease pump, with an air-to-grease ratio of 1:65 is a pneumatic operated pump that is specially designed for Centralized dual-line systems. The pump incorporates a return grease line to allow excess grease to be returned back to the grease drum for reuse. The pumping unit comprises of pressure reducing valve/filter (for incoming air supply), inter-connecting hoses and Valve Control Center with 3-way change-over valves and solenoids.

Electronic Control Unit CC1 (part #: 906 287) / CC3 (part #: 906 288)

This PLC- based Control Unit (CC1) controls all connected lubrication points with the same lubrication interval. The adjustable "pump" interval can be set from 1-32700 s (545 min) and "pause" interval from 1-32700 min (545 h). An alarm contact from the low level switch on the grease pump warns when grease level in the drum is low. The CC1 receives 4-20mA / contact signals from pressure transducers or pressure switches respectively ensures that the line pressure has reached the pre-set pressure. The CC3 Control unit can control up to three separate greasing channels, each with its own lubrication interval and pumping unit or control one pumping unit with three separate sub systems each separated with automatic shut-off valves

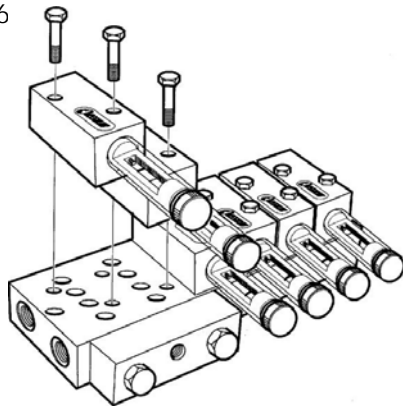


CC1
 Supply voltage:
 230 V- 50/60 Hz
 Control voltage: 24 VDC

 Dimensions: (W x H x D)
 15-3/4 x 12-3/16 x 71/16"
 (310 x 400 x 180 mm)

Dosers and Baseplates

These modular dosers are adjustable to dispense the required volume of grease to the lube points. Each doser can be selected to feed one or two lube points. Dosers are mounted on baseplates, (available in aluminum or stainless 316) that can accommodate 2 to 6 dosers. Crossport manifolds can be attached to the baseplate to couple 2 or 3 dosers to feed a single lube point which requires a large grease dosage volume. The modular design of the doser and baseplate allows for easy replacement or removal of the baseplate without the need to dismantle the fittings or lubrication lines or shutting down the system. Doser are available in zinc-plated or stainless steel 316

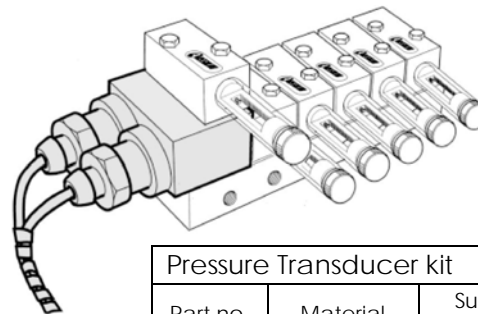


Dosers				
Part no. (SS316 / Aluminum)	Type SS 316	Type Aluminum	# of outlets	Dosage g/cycle **
101729 / 101728	GD 012SS	GD 012 FZ	2	0.15-0.70
101731 / 101730	GD 011SS	GD 011 FZ	1	0.30-1.45
101733 / 101732	GD 12SS	GD 12 FZ	2	0.25-1.25
101735 / 101734	GD 11SS	GD 11 FZ	1	0.50-2.55
101737 / 101736	GD 22SS	GD 22 FZ	2	0.7-4.5
101739 / 101738	GD 21SS	GD 21 FZ	1	1.5-9.0

** grease density: 0.88 g/cm² (0.03 lb/in³)

Pressure Transducer Unit

Each pumping (lubrication) cycle interval ends when the Electronic Control unit has received feedback signal that the pressure at the furthest end of the lubrication system has reached its pre-set pressure. A pressure transducer kit is mounted between the base plate and the last doser in the system. The kit comprises of two pressure transducers - one for each main header. Each transducer is 24 V DC (2 wire), loop powered with output signal; 4-20 mA corresponding to pressure of 0 - 3626 psi.



Pressure Transducer kit		
Part no.	Material	Surface finish
101796	Aluminium	Anodized
101797	SS 316	None

Canadian distributor:



Calgary – Head office

P.O. Box 68058

28 Crowfoot Terrace NW

Calgary, Alberta T3G 3N8

Tel: (403) 547-5002 / fax: (403) 547-5009

Email: info@mcadooflowsystems.com

Website: www.mcadooflowsystems.com

Edmonton office

P.O. Box 39

Calmar, Alberta T0C 0V0

Tel: (780) 985-2238 / fax: (780) 9852281