



Pneumatic Grease Pump

It may not be possible to empty a grease drum completely by means of a conventional pump. It is normal for 10 – 20% of grease to be left in the drum because the pump is not able to pump out the remaining grease at the bottom of the drum.

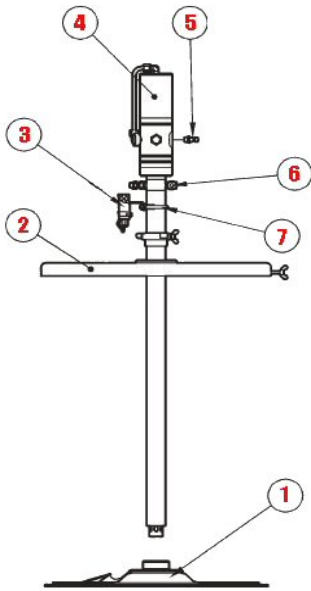
Assalub's 'environmentally friendly' grease pump is specifically designed for use on Centralized Automatic Grease Lubrication systems, allows the user to empty the grease keg or drum almost completely.

This pneumatically driven pump is mounted on the follower plate that is pushing down on the existing grease level in the drum by gravity and pump vibration. As more grease is being dispensed, the follower plate lowers further compressing the remaining grease.



It's a win – win – win situation:

- ❑ The environment benefits from having to dispose less waste grease.
- ❑ Pump height is a simple visual indicator of the amount of remaining grease.
- ❑ Your organization benefits from the savings (up to 20%) from the additional available grease.



1:65 Grease pump (5 gal. Pail / 50LB / 20Kg)

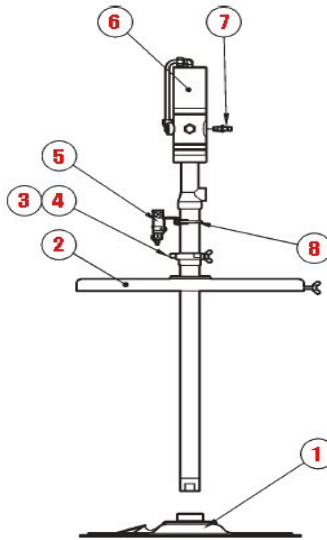
- | | | |
|----|---|-----------------|
| 1) | Follower plate 10.8" – 11.4" dia. (275 – 290mm) | 0102202 |
| 2) | Drum lid 9.8" – 12.6" dia. (250 – 320mm) | 0102019 |
| 3) | Optional limit switch | 1117069 |
| 4) | Grease pump | 0102095 |
| 5) | R – NPT female adapter | 0906801/0906802 |
| 6) | Plug | 3201113 |
| 7) | Optional limit switch holder | 0102206 |

1:65 Grease pump (110lb keg type / 50Kg)

- | | | |
|----|---|-----------------|
| 1) | Follower plate 13.4" – 14.15" Dia (340 – 360mm) | 0102142 |
| 2) | Drum lid 13.8 – 16.5" Dia. (350 – 420mm) | 0102111 |
| 3) | Optional limit switch | 1117069 |
| 4) | Grease pump | 0102094 |
| 5) | R – NPT female adapter | 0906801/0906802 |
| 6) | Plug | 3201113 |
| 7) | Optional limit switch holder | 0102206 |

1:65 Grease pump (400 lb drum type / 180Kg)

- | | | |
|----|---|-----------------|
| 1) | Follower plate 21.8" - 22.8" Dia. (555 – 580mm) | 0102116 |
| 2) | Drum lid 21" – 23.8" Dia (535 – 605mm) | 0102110 |
| 3) | Optional limit switch | 1117069 |
| 4) | Grease pump | 0102093 |
| 5) | R – NPT female adapter | 0906801/0906802 |
| 6) | Plug | 3201113 |
| 7) | Optional limit switch holder | 0102206 |



1:6 Grease transfer pump (400 lb / 180 Kg)

- | | | |
|----|---|-----------------|
| 1) | Follower plate 21.8" - 22.8" Dia. (555 – 580mm) | 0102116 |
| 2) | Drum lid 21" – 23.8" Dia (535 – 605mm) | 0102110 |
| 3) | Drum bung fitting | 0122136 |
| 4) | Screw | 0230723 |
| 5) | Optional limit switch | 1117069 |
| 6) | Pump 1:6 | 0102100 |
| 7) | R – NPT female adapter | 0906801/0906802 |
| 8) | Optional limit switch holder | 0102206 |

Complete grease pump kit assembly

1:65 Grease pump (5 gal. Pail / 50LB / 20Kg) 200010
Includes items 1,2,4,5 & 6

1:65 Grease pump (110lb keg type / 50Kg) 200048
Includes items 1,2,4,5 & 6

1:65 Grease pump (400 lb drum type / 180Kg) 200049
Includes items 1,2,4,5 & 6

1:6 Grease transfer pump (400 lb / 180 Kg) 200069
Includes items 1,2,3,4,6 & 7

1:65 Grease pump

Capacity: Approx. 2.65 lb/min (1200g/min)
 Air pressure, min-max: 43.5-145 psi (3-10 bar)
 Grease pressure: 7540 psi MPa (520 bar)
 @ 116 psi air pressure
 Grease supply outlet: ¼" NPT
 Grease return inlet: Plugged tube fitting (12mm)
 Air connection: ¼" NPT
 Pump tube: Dia. 2" (50 mm)
 Materials: Anodized aluminum, tempered and steel, brass and plastic
 Sealings: Nitrile rubber

1:6 Grease transfer pump

Capacity: Approx. 24.25 lb/min (11 kg/min)
 Air pressure min-max: 43.5-145 psi (3-10 bar)
 Grease pressure: 696 psi (48 bar)
 @ 116 psi air pressure
 Grease connection: ¼" NPT
 Air connection: ¼" NPT
 Pump tube: Dia. 2" (50 mm)
 Height: 37.8" (56.7" total)
 Weight: 21.6 lbs (9.8 kg)
 Materials: Anodized aluminum, steel, stainless steel, brass and plastic
 Sealings: Nitrile rubber

Contact your local Authorized distributor for details and pricing:

MCADOO FLOW-SYSTEMS LTD.

P.O. Box 68058, 28 Crowfoot Terrace NW, Calgary T3G 3N8
 Tel: (403) 547-5002; Fax (403) 547-5009
 Email: info@mcadoolflowsystems.com, website: www.mcadoolflowsystems.com