

Kytola

INSTRUMENTS

FLOWMETERS



Model LH



Model LT



Model LR



Model L with constant flow regulator model 2850

Model L

Kytola® model L is a sturdy variable area flow meter for industrial liquid and gas flow monitoring.

FEATURES

- Plastic flow tube with stainless steel connections
- Flow adjustment valve
- Several flow ranges, up to 3 l/min H₂O
- Clear, easy to read scale

TYPICAL APPLICATIONS

- Gas purging
- Water purging
- Liquid and gas monitoring

OPTIONS

- Scale for alternative gases and liquids
- Constant flow regulator
- Hand knob in flow adjustment valve
- Viton® or EPDM seals



Model	LH-	LR-	LT-
Flowtube	Acrylic	Grilamid	Trogamid
Max. temperature	165°F	175°F	158°F
Max. pressure	290 psi (440 psi @ 85°F)	290 psi (440 psi @ 95°F)	290 psi (440 psi @ 85°F)
Accuracy	±10% F.S. (H ₂ O @ 70°F)		
Valve	AISI 316		
Connectors	AISI 316		
Seals	Nitrile (Viton®, EPDM)*		
Connections	NPT ¼" (BSP ¼")*		
Weight	0.6 lb		

*Special construction on request

L - - -

H
R
T

Flow tube material

A	Acrylic
R	Grilamid
T	Trogamid

H₂O flow range Air flow range

4K*	0.05-0.3 USG/h	0.2-2 SCF/h
4A*	0.05-0.45 USG/h	0.4-2.8 SCF/h
4B*	0.1-0.9 USG/h	0.75-4 SCF/h
4C*	0.3-1.3 USG/h	1.5-6 SCF/h
5K	0.2-2 USG/h	1-14 SCF/h
5A	0.2-3.6 USG/h	1-16 SCF/h
5B	0.5-5.5USG/h	2-24 SCF/h
5C	1-8.5 USG/h	4-32 SCF/h
8T	2-12 USG/h	5-45 SCF/h
8M	2-17 USG/h	10-70 SCF/h
8P	4-26 USG/h	20-120 SCF/h
8S	2.5-40 USG/h	20-200 SCF/h
8R	7.5-45 USG/h	20-240 SCF/h

Scale labels

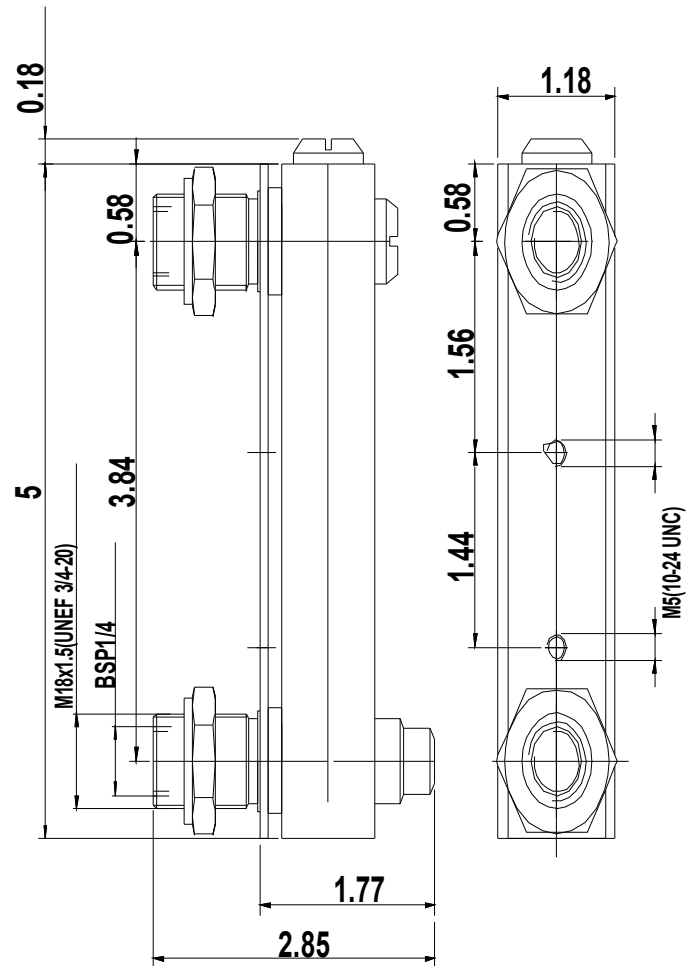
A	H ₂ O scale l/min (ml/min for 4K-4C)
N	H ₂ O scale USG/h (70°F)
R	Air scale NI/min
V	Air scale SCF/h (70°F, 14.7 psia)
L	Dual scale USG/h H ₂ O and SCF/h air
M	Dual scale l/min H ₂ O and NI/min air
D	Relative scale 1-10

Special feature

H	Hand knob in valve
R	Connections BSP ¼"
V	Viton® -seals

Example: LR-5CL-HV

*Accuracy is not guaranteed



(inch)

2004-10-01