

Model 6210

Model 6210 meter is designed to meet the standards of industries to measure and monitor corrosive and viscous liquids. The meter consists of 2 elliptical gears which the flow rotates. The rotation frequency is proportional to the flowrate. The rotation is picked up by an inductive proximity sensor or a coil sensor and the pulse signal can be fed to indicators, counters and automation systems.



Model 6210

FEATURES

- Several flow ranges
- Large viscosity range (30 - 1000 cSt)
- Independent of viscosity changes
- Pulse output
- Chemical resistant materials

TYPICAL APPLICATIONS

- Chemical dosing
- Industrial flow monitoring
- Process control

OPTIONS

- Alternative materials
- Thread adapters
- Alternative sensors



Model	6210-1-	6210-2-	6210-4-	6210-10-	6210-20-	6210-30-
Pulses/Pint	388	213	142	59	35	23
Connections	1/4"	1/4"	1/4"	3/4"	3/4"	3/4"
Gears & Body - K	PVDF					
Body - P	PVC					
Shafts	Hastelloy C					
Seals	Viton® (* Nitrile, EPDM)					
Sensor	Namur; DIN 19234 (* other types of inductive prox. sensors)					
Max. pressure	145 psi					
Max. Temp : - K	176°F					
- P	104°F					
Viscosity range	30 – 1000 cSt (> 30 cSt)					
Accuracy	± 5% of reading					

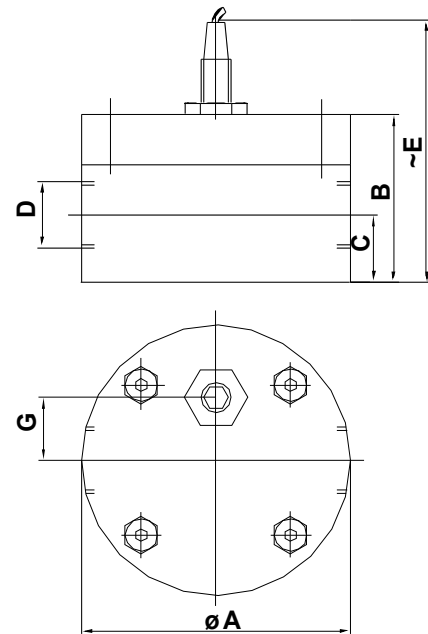
*)special construction on request

6210 - -

	Flowrange
1	0.2 – 2.1 Pint/min
2	0.4 – 4.2 Pint/min
4	0.8 – 8.5 Pint/min
10	2 – 21.1 Pint/min
20	4 – 42.2 Pint/min
30	6 – 63.4 Pint/min

	Body Material
K	PVDF - body
P	PVC - body

	Connections
	BSP - threads
N	NPT- thread adapters



MODEL	A	B	C	D	E	G	H
6210-2	2.95	1.77	0.70	1/4"	3.54	0.59	M12x1
6210-4	2.87	1.9	0.87	1/4"	3.70	0.59	M12x1
6210-10	4.25	2.64	1.06	3/4"	4.13	0.98	M12x1
6210-20	4.25	2.64	1.06	3/4"	4.13	0.98	M12x1
6210-30	4.25	3.43	1.06	3/4"	4.92	0.98	M12x1
6210-60	6.3	3.98	1.77	1"	6.30	1.46	M18x1

(inch)

2004-08-13

Kytola
INSTRUMENTS

1000 de La Gauchetière West, Suite 2400
Montreal, Quebec, H3B 4W5 • CANADA
Tel. +1 514 4482171 • Fax +1 514 4485151
email: info@kytola.ca • www.kytola.ca