

STS - Series

SITEK - DOUBLE FILTER (Patented)

Is designed to meet demanding industrial requirements. It is used to clean the supply air before field equipment (e.g. Solenoid Valve Cabinets).

Patented "ONE CAM" construction makes it possible to service a dirty filter **on-line** without any breaks in the Output Flow and pressure.

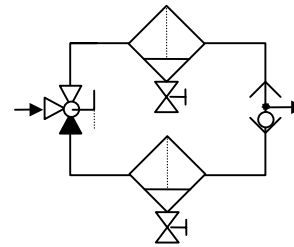
The Sitek-Double Filter is easy to install. It can be equipped with an **output pressure gauge** and a pressure switch to indicate the condition of the filter in use.

The Filter Element has to be changed when the output pressure has decreased to a specified minimum operating pressure for the equipment fed.



TECHNICAL DETAILS

Standard filter element	5 µm (type B)
Input / Output	1/2" NPT
Capacity	Cv 4,5
Operating pressure	Max. PSIG 250 (1750kPa)
Temperature range	40 to 120 °F (4 to 50 °C)
Dimensions	8 3/4" x 14" x 11 3/4" (220 x 350 x 280 mm)



ACCESSORIES

Product ¹⁾ Recommended Spare Parts	Type **	Description	Material
Bowl			Aluminium, painted
Drain Valve		Needle valve	Brass
Drain Valve	P*	Ball valve	Brass, nickel coated
Hand Valve	S3TPV-ST5-N1/2**	1/2" NPTF with Adapter	Brass, nickel coated
Body of the Shuttle Valve	SAR-ST5-N1/2**	1/2" NPTF with Adapter	Aluminium, anodised
Adapter	SMN-1/2	1/2" M NPTF	Brass, nickel coated
Pipe for the Shuttle Valve ¹⁾	SOP40-ST5 1/2	40 µm	Sintered plastics
Ball for the Shuttle Valve ¹⁾	SPLO-ST5 1/2		PTFE
Mounting Bracket			Steel, hot-dip galvanised
Pressure Gauge	PM*	0 - 160 psi	Plastic housing
Pressure Switch	PK *	7 - 160 psi adjustable	Aluminium, painted
Filter Element ¹⁾	B , C*, D*, E*	5, 0,7, 0,3, 0,1 µm	Sintered plastics
Spare Filter ¹⁾	EKF32B	5 µm	Sintered plastics

* Optional

** The N character can be replaced with letter R for G-thread E.g. SAR-ST5-G 1/2

*** The letters M and F (1/2" M, 1/4" F etc.) mean Male and Female

TYPE CODE

STS F32BG04M - P - PM - PK

Product Series _____

Filter Element _____

B	5 µm
C	0,7 µm *
D	0,3 µm *
E	0,1 µm *

Filter type _____

Pressure Switch * _____

Pressure Gauge * _____

Drain Valve _____

Needle Valve

Ball Valve *